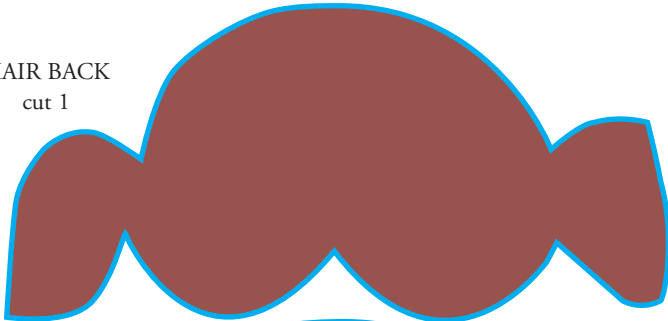


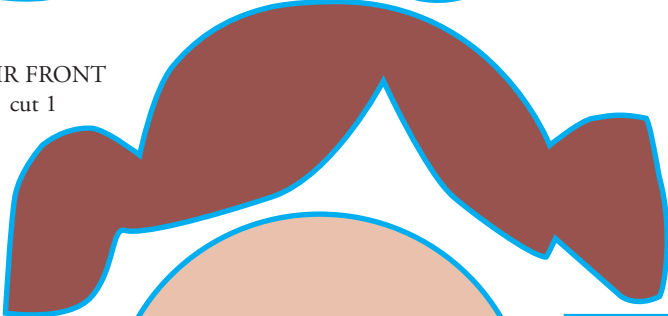
Ribbon

Place the ends of the ribbon at the back of the head and stitch them in place with the button on the front.

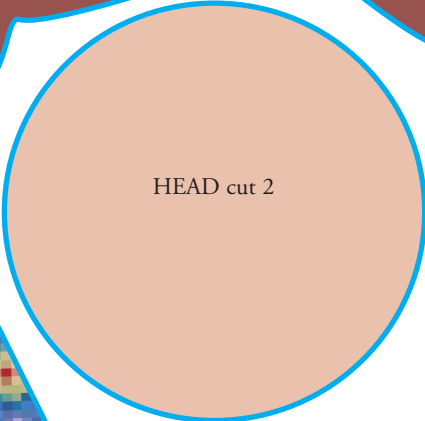
HAIR BACK
cut 1



HAIR FRONT
cut 1



HEAD cut 2

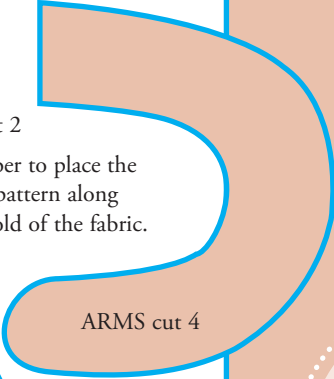


LEGS cut 2



DRESS cut 2

Remember to place the paper pattern along the fold of the fabric.



ARMS cut 4



Shoes cut 2



Template

The shapes on this page are all you need to make your lavender doll. Place a piece of tracing paper over the page and trace around the shapes. Cut them out and place the shapes on the fabric.